

Engine Performance Enhancement  
2011 GT2RS



**EVT700<sub>RS</sub>**  
**EVT700<sub>RSS</sub>**

706 Hp – 737 Tq  
(716 Ps / 998 Nm)



Evolution MotorSports Engine Performance System for the limited edition 2011 Porsche 997 GT2 RS improves an already incredible supercar into a menacing street or track monster. The stock 3.6L twin turbo engine with 620 HP and 516 lb.-ft. TQ is increased to over 700 HP and 737 lb.-ft. TQ with the EVT700RS engine upgrade. With the increase in power and TQ throughout the entire RPM range, acceleration and overall engine performance is dramatically improved.

## The Components

*“Due to the lightweight, race inspired nature of this vehicle; The EVT700 RS performance system preserves the bloodline while fusing intelligent tuning and superior lightweight components”*

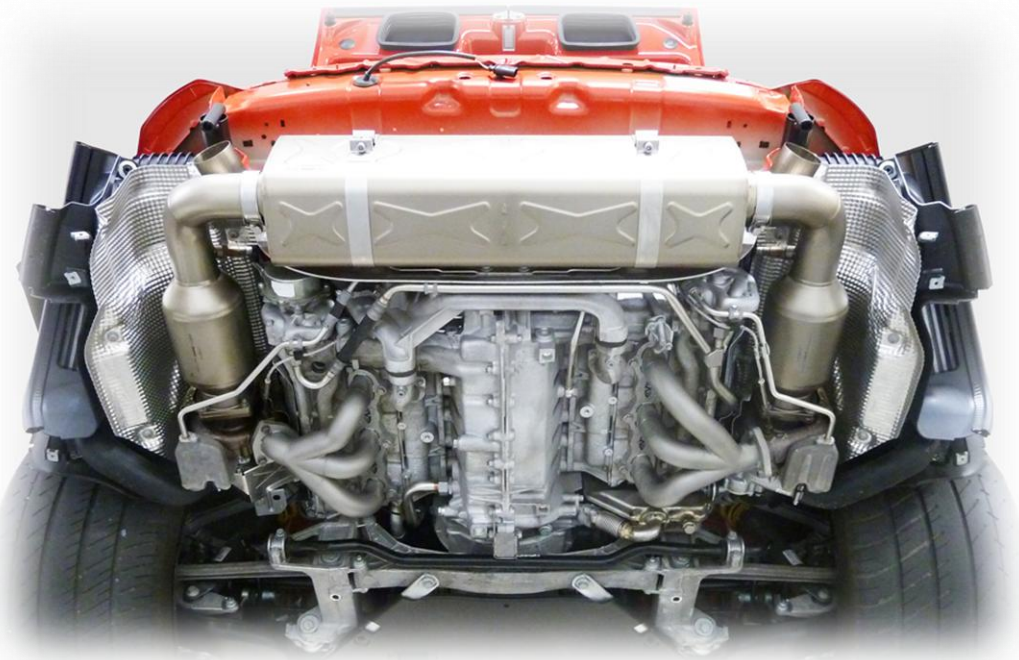
- **Todd Zuccone**, Founder, Evolution MotorSports

**Exhaust / High Flow Catalysts:** The Titanium Akrapovič (pronounced "Ack-rap'-o-vich") Evolution exhaust system with high flow 100 cpsi metallic catalysts provides a "real sports car sound" which is more suited for the GT2RS without any annoying interior resonance. This industry leading exhaust features larger tube diameters, measuring 60 mm which reduces the power-consuming backpressure thus enabling the turbochargers to be heard. The result is a significant power increase with the associated EVT700RS performance components while **reducing weight by 2 kg (4.41 lbs.), compared to the stock system.**

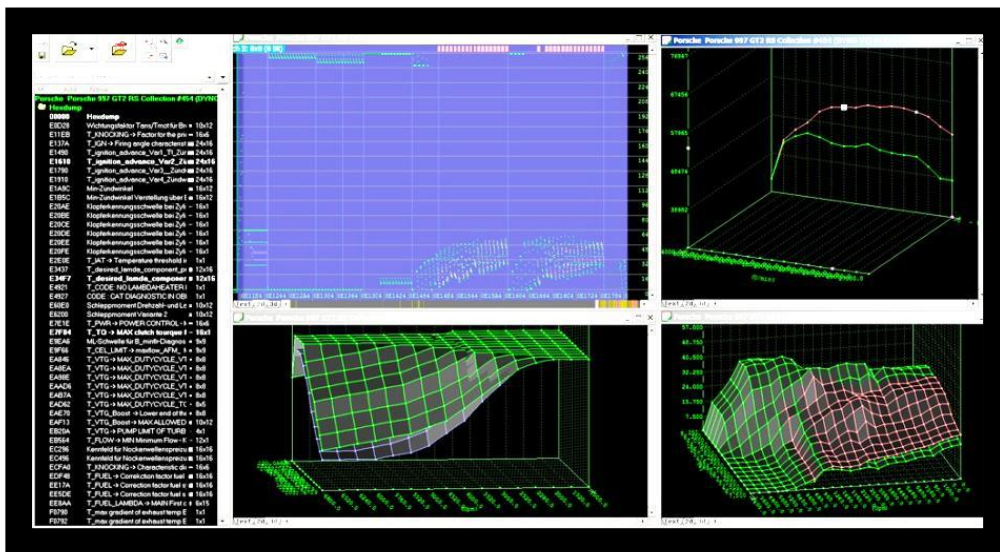


**Exhaust Manifolds / Headers:** Additional improvements to the exhaust flow come from a pair of Evolution MotorSports Stainless steel 44.5mm VTG exhaust manifolds. The design, shape and size of our headers play a critical role in the overall power and turbocharger spooling dynamics. The EVOMS VTG exhaust headers optimize the exhaust flow through the mandrel bent primary tubes and specially designed merge collectors. They yield superior flow characteristics and were developed specifically for the power requirements of the GT2 RS EVT700RS Performance System. The EVOMS VTG headers further **reduce weight by 1.16 kg (2.55 lbs.), compared to the stock system.**





**Intelligent Software Tuning:** The final piece of the performance package comes together with careful refinements to the OEM engine management system. Our *fanatically obsessive* procedures to achieve **ultimate perfection** with the GT2RS engine software are carried out by our years of unparalleled success with this engine platform. Our analytical tuning methods combined with methodical testing procedures, state of the art equipment and unmatched mechanical intelligence are fused together to create the **ULTIMATE** performance software.



Careful recalibration to the boost, ignition maps and lambda values are essential to safely optimize performance. Further refinements are made specifically to maximize power from the free flowing exhaust system, 100 cpsi high flow catalysts, more efficient VTG headers and improved intake airflow are also key features of the software tuning.

*"Particularly impressive is the EVOMSit software tuning. Partial-throttle response, often a weak spot with aftermarket tunes, is every bit as good as a factory GT3's. It's the final piece in that rarest of puzzles: an aftermarket engine that outshines its factory basis"*

- Pete Stout, Editor of Excellence Magazine  
 "Hello 8800 RPMs" 997 GT3 RS 3.9L [Excellence Magazine Link](#)

**997 Turbo Tuning Reputation** Since 2007, when the 997 turbo generation was born, Evolution MotorSports software tuning division, Intelligent Tuning (EVOMSit) has lead the industry with unmatched performance and reliability. The entire 997 turbo platform from 2007 including the 2008 GT2 as well as the 2011 GT2 RS are controlled with the same Bosch ME7.8.1 ECU. A critical and fundamental aspect of our software development and tuning stems from complete hands on mechanical understanding of the latest generation high performance Porsche engines. This is the foundation of our company's research and development which has helped enable us to hold nearly every world speed record for the 996TT and 997TT platform with the OEM Bosch Engine Management System.



**World Records Include:**

- Fastest 997TT in the Standing Mile - 236.4 MPH
- Fastest 997TT in the ¼ Mile - 9.90 @ 149.1 MPH
- Fastest 997TT Tiptronic in the ¼ mile - 9.90 @ 147 MPH
- Fastest 997TT Tiptronic - Stock Turbos - ¼ mile - 10.48 Sec
- Highest Documented Power from a 997TT - 1380 WHP
- Fastest 997.2TT 1/4 Mile Record - 10.73 @ 129.7
- Fastest 996TT from 60-130 MPH 3.96 seconds
- Fastest 996TT from 0-300 KM - 14.41 Seconds
- Fastest 996TT in the Standing Mile - 234.6 MPH
- Fastest 996TT in the ¼ mile – 151.4 MPH

*“Properly designed engine hardware, combined with custom EVOMSit software equates to optimized power, efficiency and long term reliability”*

- **Todd Zuccone**, Founder, Evolution MotorSports

**GT2RS EVT700RS Performance System Highlights:**

- Significant Increases to horsepower and torque throughout the entire rev range
  - 150 Hp Increase @ 4500 RPMS
  - 200 lb/ft. Tq Increase @ 4250 RPMS
  - 100 lb/ft. Tq Increase @ 3250 RPMS
  - 80 Hp & ~100 lb/ft. Tq Increase @ Rev Limit
- Dramatically improves overall engine performance, power and acceleration
- Custom calibrations for track applications available including enabling left foot braking
- Reduced weight by 3.16 kg (6.91 lbs.)
- Increased Rev Limit to 7000 RPMS upon request
- Zero adverse effects to normal drivability
- Extensively tested and performance verified during dyno simulation and real world driving conditions
- Specific software calibrations available for 91 octane, 93 octane and 103 octane fuels
- Specific software calibrations available for European 95 RON, 98 RON and 100 RON fuels

**GT2RS EVT700RS Performance System Components:**

- Evolution MotorSports – Intelligent Tuning software calibration with IST and SP
- Akrapovič Titanium Evolution exhaust system – 60mm
- Akrapovič Titanium Evolution high flow 100 cpsi metallic catalysts
- Evolution MotorSports 321-Stainless steel 44.5mm VTG exhaust manifolds
- Evolution MotorSports billet turbocharger boost recirculation valves
- BMC high flow air filter

**GT2RS EVT700RS Performance System Prices and Recommended Optional Equipment:**

**GT2RS EVT700RS Standard Equipment:**

Price: **\$17,950\***

*\*Price does not include installation – Estimated installation time for the EVT700RS as listed above is 8-10 hours. Installation with optional “Sport” options adds an additional 8-10 hours*

**GT2RS EVT700RS-S “Sport” Optional Equipment:**

- EVOMS HED High Output Ignition Coils
- EVOMS Lightweight Underdrive Crank Pulley
- EVOMS Specification Denso spark plugs

Price (Optional “Sport” Equipment): **\$1,375\***

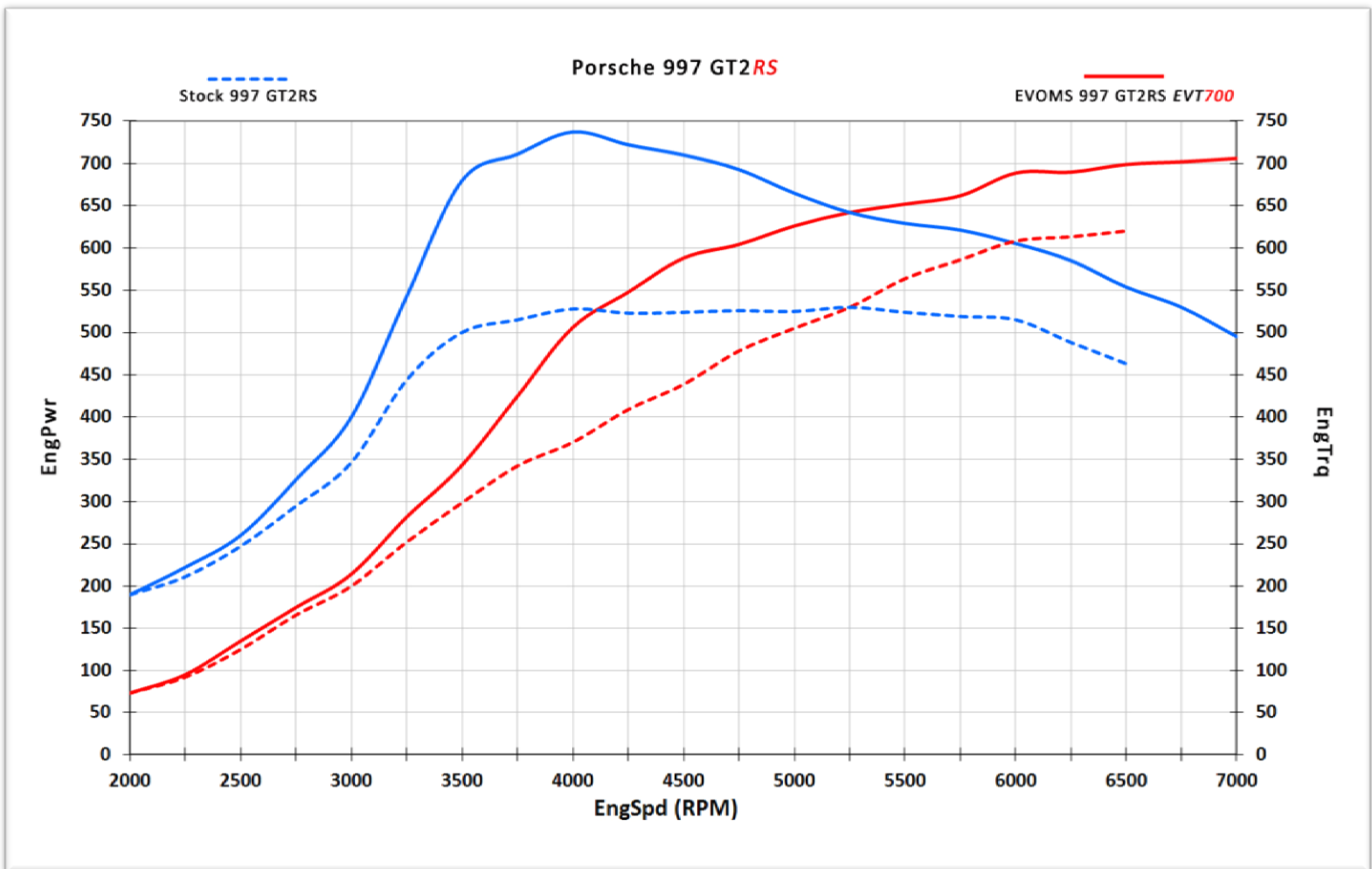
# EVT700RS - 706 Hp / 737 Tq

Evolution MotorSports Engine Performance System for the limited edition 2011 Porsche 997 GT2 RS dramatically transforms the performance of this amazing supercar. Our dedication to the true race inspired bloodline is evident with the highest quality, lightweight and properly engineered components. These components, combined with the Intelligence of our custom tuned engine software then become an Evolution MotorSports EVT700RS Performance System. With 706 HP and 737 lb.-ft. of TQ under your foot, the EVT700RS engine upgrade will claw at the pavement propelling you into what we know as *"intelligent tuning – Insanely Tuned."*



VIDEO LINK: [EVT700RS Dyno and Driving Video](#)

	Stock GT2RS	EVOMS GT2RS EVT700RS	Percent Increase
Max. Power Output HP	620 Hp @ 6500 RPM's	706 Hp @ 6900 RPM's	14% Increase Peak Hp
Max. Engine Torque TQ	516 Tq @ 4000 RPM's	737 Tq @ 4000 RPM's	43% Increase in Peak Tq
Average TQ	421 Tq	549 Tq	30% Increase in average Tq
Average Power	364 Hp	479 Hp	32% Increase in average Hp



## Evolution MotorSports

1625 E. Weber Drive  
Tempe, AZ 8528 – USA

P: 1.480.317.9911 | F: 1.480.317.9901

[info@EVOMS.com](mailto:info@EVOMS.com)

[www.EVOMS.com](http://www.EVOMS.com) [www.EVOMSit.com](http://www.EVOMSit.com)

