

2009 +

Cayman S / Boxster S - DFI

07' - 08'

Cayman S / Boxster S



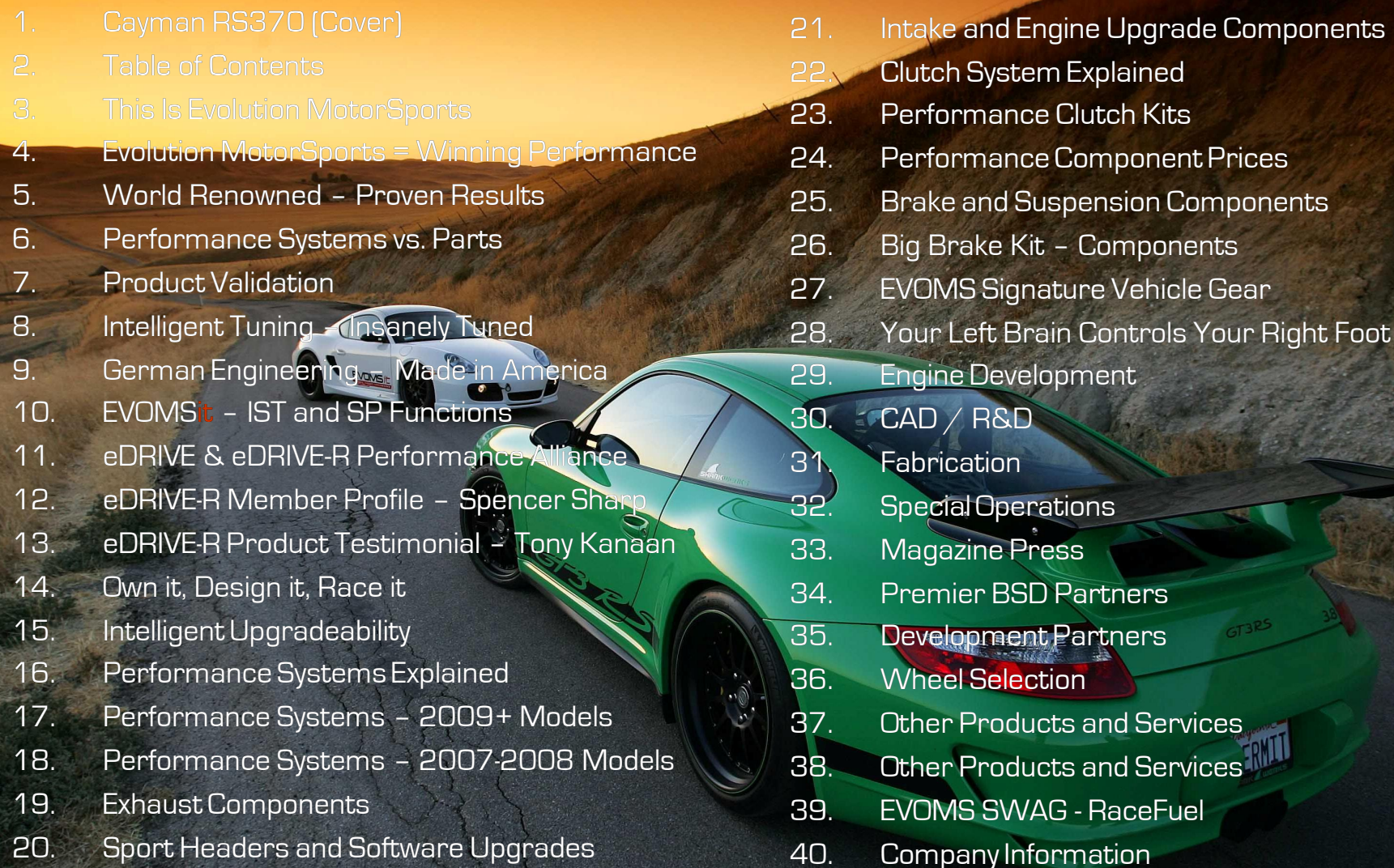
INTELLIGENT TUNING . . . INSANELY TUNED





INTELLIGENT TUNING - CONTENTS



- 
1. Cayman RS370 (Cover)
 2. Table of Contents
 3. This Is Evolution MotorSports
 4. Evolution MotorSports = Winning Performance
 5. World Renowned – Proven Results
 6. Performance Systems vs. Parts
 7. Product Validation
 8. Intelligent Tuning – Insanely Tuned
 9. German Engineering – Made in America
 10. EVOMS **it** – IST and SP Functions
 11. eDRIVE & eDRIVE-R Performance Alliance
 12. eDRIVE-R Member Profile – Spencer Sharp
 13. eDRIVE-R Product Testimonial – Tony Kanaan
 14. Own it, Design it, Race it
 15. Intelligent Upgradeability
 16. Performance Systems Explained
 17. Performance Systems – 2009+ Models
 18. Performance Systems – 2007-2008 Models
 19. Exhaust Components
 20. Sport Headers and Software Upgrades
 21. Intake and Engine Upgrade Components
 22. Clutch System Explained
 23. Performance Clutch Kits
 24. Performance Component Prices
 25. Brake and Suspension Components
 26. Big Brake Kit – Components
 27. EVOMS Signature Vehicle Gear
 28. Your Left Brain Controls Your Right Foot
 29. Engine Development
 30. CAD / R&D
 31. Fabrication
 32. Special Operations
 33. Magazine Press
 34. Premier BSD Partners
 35. Development Partners
 36. Wheel Selection
 37. Other Products and Services
 38. Other Products and Services
 39. EVOMS SWAG - RaceFuel
 40. Company Information

THIS IS EVOLUTION MOTORSPORTS



Driving a performance car and Driving an intelligently tuned performance automobile are very demanding and contrasting dynamics. The first can be accomplished by driving a new Porsche Cayman S out of the dealer showroom and living happily with regular maintenance and a cup of coffee at the dealer. The second requires Evolution MotorSports (EVOMS) in Tempe, Arizona –USA, where:

Intelligent Tuning and
INSANELY TUNED
CONVERGE!



EVOMS specializes in building Performance Systems and Supercars that maintain creature comforts for street driving while setting scorching times on race days, charging through the canyons, or enjoying those long drives on wide open freeways to the next "Cars & Coffee." Porsche, Lamborghini, Ferrari, Bentley, Mercedes, Gumpert, and many other marquees start their transformation with these 5 memorable letters: **E-V-O-M-S**

Since 1997, EVOMS founder, Todd Zuccone and his team of fanatical designers have been engineering and crafting Performance Systems that have fueled an industry. Mr. Zuccone was born into a "Porsche" family and spent his early years at the race track where he was modifying and driving Porsche 911's at the age of 12. This fueled his passion and set in motion his lifetime dedication and experience with Porsche. His vision to create the ultimate upgrade components and Performance Systems for Porsche cars continues to be realized and has been documented throughout his career and in this catalog. Read on to learn more about what makes Evolution MotorSports a true leader in aftermarket Porsche Performance.



EVOLUTION MOTORSPORTS = WINNING PERFORMANCE



Performance-Engineered is the foundation behind developing our impeccable bloodline of upgrade components. Thousands of hours of advanced CAD engineering, prototyping, virtual testing and real world product validation are invested in our products ensuring the most efficient and powerful designs, fused with function and reliability. Our upgrades and Performance Systems are designed to meet or exceed the quality of OEM components and provide pure exhilarated performance for today, tomorrow and years to come.

EVOMS products represent the next level of performance that other aftermarket companies can only dream about creating.



Evolution MotorSports Showroom - USA



Mr. Gumpert & Mr. Zuccone

INDUSTRY LEADERS

Evolution MotorSports has been a recognized leader in the aftermarket performance industry for over a decade. More recently, in 2008, Evolution MotorSports was selected by Mr. Roland Gumpert, founder of Gumpert Sportswagenmanufaktur GmbH, as the U.S. final assembly and Performance Validation Center for the world renowned Gumpert Apollo. The Gumpert team selected Evolution MotorSports for their exceptional technical background, unparalleled facility and their commitment to perfection. This type of affiliation doesn't come by accident, but driven by a passion for excellence and an annoying obsession with fine details. This is Evolution MotorSports.



EVOMS Team with the Gumpert Apollo

apollo

WORLD RENOWNED - PROVEN RESULTS



Evolution MotorSports is world renowned and owns one of the finest aftermarket Autoteknik facilities in the USA. Our impeccable tuning center is the home to our design, engineering, manufacturing, testing and distribution. Our purpose built, state of the art all wheel drive Mustang Dynamometer cell with data acquisition equipment and wind tunnel cooling/ventilation system is second to none. Our tuning equipment, combined with our methodical testing procedures and our comprehensive knowledge allows us to test and tune with the most accurate results and feedback from the vehicle. All of our equipment and the entire dyno testing process have been developed and perfected over the past 10 years.



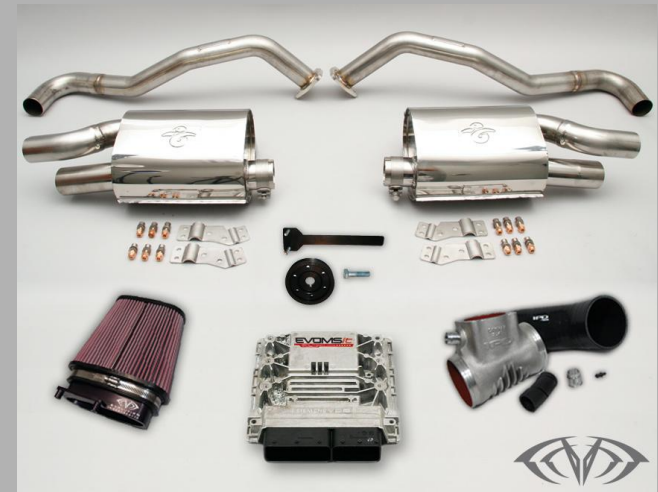
Every Performance System installed at our Tempe, Arizona headquarters undergoes extensive testing where over 50 different engine functions are recorded and monitored to ensure optimum performance with OEM reliability and drivability.

PERFORMANCE SYSTEMS vs PARTS



Evolution MotorSports established its reputation on creating and designing its own proprietary performance products. These include turbochargers, intercoolers, exhaust headers/ mufflers, air induction systems, clutch components and many other integral components that improve the performance of a stock vehicle. When these components are coupled and tuned together with our intelligent software engineering, our proprietary products have evolved to become Performance Systems.

Remember, these are Performance Systems not a “hodge podge” of various manufacturers’ bolt on parts. Typical “tuning shops” or mail order companies are merely clerks who sell O.P.P. [Other Peoples Products] This creates many problems. A mash-up is a great music style, but a mash-up of ill matched components that were not engineered to operate together is a recipe for disaster and disappointment. The R&D Team at EVOMS has spent countless hours prototyping, improving, testing on the street, Dyno and track, each component that makes up the EVOMS Performance Systems.



An EVOMS Performance System is meticulously engineered from preliminary ideas where the EVOMS design team analyzes specific performance criteria. ECU programming and components are researched, CAD designed, 3D modelled, prototyped and manufactured to meet those strategic goals. On rare occasions we choose a sourced component and is integrated into our development process based on stringent testing on the Dyno, street, and track. Next, systematic analysis is conducted where reengineering, further testing and tuning is performed and refinements are made, sculpting the final system.

The EVOMS design team engineers and builds the worlds most advanced and powerful Porsche performance systems!!

PRODUCT VALIDATION



Our in house product validation begins with Company Founder, Todd Zuccone, where he spends weeks and months driving the vehicle, refining the software while critically analyzing the entire “feel” and performance of the vehicle. After he is satisfied, the vehicle makes it’s way through the entire EVOMS team where each driver gets a chance to provide feedback from a wide variety of different driving styles. Finally, after all internal input is analyzed and sorted as necessary, the vehicle enters into the final phase of development, our eDRIVE Product Validation Program. (Read more about eDRIVE and eDRIVE-R on page 11 - 12) At this point, after any final tweaks are made to create perfection, EVOMS performance components have been insanely tested, tuned and can now be called an Evolution MotorSports Performance System.



Our insanely tested and tuned Performance Systems are engineered to work harmoniously and intelligently depending on individual power requirements. We offer several options for different driving styles and performance criteria.

Performance Systems are available from 10 – 150 additional HP/TQ

INTELLIGENT TUNING - INSANELY TUNED



Intelligent Tuning – Insanely Tuned. These are not just words; this is the SOUL of Evolution MotorSports. With each new generation of technology, this core essence of our existence is what differentiates us from the competition. In 2001, we began the “Insanely Tuned” revolution with our over the top, high horsepower 996 & 997 twin turbos, which continue to dominate the industry. Our perseverance and core beliefs have been substantiated with many coveted awards and current standing world records. Our vast performance innovations have set the industry standard and are currently used as the benchmark for many companies and consumers alike. While “they” try to catch up and replicate or duplicate our technologies, we have surpassed our own advancements while raising the bar even higher. Once you experience this elevated level of mind bending performance, it is a virus in your blood.



Current World Records:

- Porsche Standing 1-Mile 231.4 MPH -Texas Mile, 2009
- Porsche 0-300 KM 15.95 Seconds -Texas Mile, 2009
- Porsche 996 ¼ Mile Speed: 150 MPH -Englishtown, NJ 2007
- Porsche 996 ¼ Mile Time: 9.67 Seconds -Englishtown, NJ 2007

Evolution MotorSports has many ways to CURE the endless craving for an unrivaled existence.

GERMAN ENGINEERING - MADE IN AMERICA



A Performance System with EVOMS "Intelligent Tuning" begins inside the Engine Control Unit (ECU) "brain" of the vehicle. EVOMS - Intelligent Tuning, (EVOMS*it*) combines a superior mechanical expertise with an unequivocal capacity to calibrate the most complex automotive computer electronics. When you experience the thrill of EVOMS*it* software installed into your automobile, you will begin to realize our world of intelligent tuning, insanely tuned. Our stringent testing assures pure, crisp and consistent power in all of the conditions you like to enjoy your vehicle. Most software upgrades on the market have either never been tested or these companies spend precious time developing useless options that do not belong on a high performance vehicle. We spend 100% of our R&D efforts on the development and testing of performance software, period. Our painstaking attention to details combined with our meticulous calibrating procedures clearly set us apart in the world of software development.



The EVOMS*it* software engineering team consists of a worldwide network of the most qualified and highly respected members of an elite tuning community. Our Arizona headquarters is responsible for the research, development and testing where founder and President Todd Zuccone is in charge of the software calibrations and ECU tuning. Mr. Zuccone works directly with Senior Technician / Porsche specialist and engine builder John Bray. The combination of these two powerful, mechanical and meticulous minds are responsible for deciphering and understanding the "brain" of the cars, translating the information and making the necessary changes to allow all of the engine systems and software calibrations to work together in perfect synchronicity.

EVOMS*it* performance software represents the apex of technology where pure adrenaline is fused with **ULTIMATE PERFORMANCE.**

EVOMSiT "IST" AND "SP" FUNCTIONS



IST (Integrated Switching Technology™): The Intelligent Tuning of EVOMSiT software automatically adjusts for different octane levels of fuel, altitude and other atmospheric conditions the car will encounter. IST is an OEM feature built into the factory ECU allowing automatic switching of ignition timing maps based upon input received from other engine sensors. We incorporate multiple OEM ignition tables that are progressively staged to our performance specifications, which automatically optimize safe performance based upon outside conditions and different octane fuels. The ECU automatically switches to the best-suited ignition map creating an automatic "race mode" if race fuel is utilized. This IST function is always active and will switch automatically without having to make any physical changes while maintaining optimum performance.

SP (Sport Pedal™): All E-Gas (drive by wire) cars from model year 2000 and newer have an electronic throttle valve, which is controlled by the ECU. The EVOMSiT Sport Pedal™ (SP) feature changes the ratio of accelerator pedal movement verses opening of the throttle valve increasing throttle response. By modifying these maps in the ECU calibration, throttle response is drastically improved and the "throttle delay" is virtually eliminated.



The eDRIVE and eDRIVE-R, Performance Alliance and Product Validation Program, is an exclusive group of non EVOMS employees who provide critical feedback about our products and performance systems during the final stages of our product development process. This program puts some of the most powerful and most expensive street cars on the planet in the hands of our most opinionated customers (eDRIVE) and independent race professionals (eDRIVE-R), making them an integral part of our product validation and feedback process. eDRIVE and eDRIVE-R member feedback and opinions are some of the most trusted by the research and development team at Evolution MotorSports. Members are encouraged to be hyper critical and give real world feedback after driving one of our cars for a race weekend, a week, or an extended road trip.

This program provides Evolution MotorSports a competitive advantage which allows us to use this feedback and makes final adjustments to our products before they are released. This is the most effective way we can assure that a final performance component or Performance Systems has been put through real world tests by real world drivers. These members understand the difference between driving a nice car and participating in the development of Insanely Tuned Luxury Exotics. Here are some comments from our inaugural eDRIVE member, Luis Fraguada, a longtime Porsche enthusiast and racer:



I'm excited to join eDRIVE. I've been a Porsche enthusiast since birth (Yes, I have pictures). The eDRIVE program allows someone like me, a qualified track instructor and passionate street driver to participate in the validation of products that ultimately I will be able to purchase. No other tuning company has a program like this. In fact, besides Porsche, no other company that I am aware of offers this level of customer feedback in their product like EVOMS is doing with their eDRIVE, Performance Validation Alliance program."

There are many people who sell Porsche parts and call themselves "tuners." Evolution MotorSports has taken their research, development, knowledge and experience and put it on the track to build the fastest Porsches in the world.

While there are only a couple of Porsche tuners that I truly respect for their achievements, none have been able to do what EVOMS has done. This proves to me that EVOMS is not afraid to hear and include constructive criticism from real users, because that is the purpose of eDRIVE. This is the reason I am proud to be part of the eDRIVE program.

After a weekend of driving the EVOMS EVT700 997 turbo, I was on the phone with Mr. Zuccone giving my feedback. He was very excited to hear my experience with the car and wanted to hear what improvements I could point out after my weekend with the car. The opinions of the eDRIVE members validate the designs and performance of the components or systems. EVOMS makes improvements which will be integrated before the systems are available to consumers.



Spencer At A Glance:

2007

- Professional Team Driver:
Grand American Koni Challenge
Horsepower Ranch Porsche 996 & 997

2006

- 4 race wins in American Iron Racing Series
- 3rd - FFR National Championships
- 4th - American Iron National Championships

2005

- West Coast FFR Champion
- 12 race wins
- 2nd place FFR National Championships

2004-past

- SCCA Regional rookie of the year
- Multiple track records & national event wins
- 7 year Instructor - Bondurant Driving School
- IKF National Kart winner
- IKF Las Vegas street race winner

Professional History At A Glance

- Instructor for the Bondurant Driving school
- Anti-terrorist driving instructor
- Vehicle certification: Ford, Nissan, Subaru
- Vehicle Testing for ride and drive events
- Stunt driver for "B Roll Films"
- Ford Advertisement Driver: GT 500, F-150
- Journalist, Grassroots Motorsports
- SAG Member
- Motor Press Guild member



Spencer Sharp

Occupation: Professional Driver, Event Production

Hometown: Phoenix, Arizona

Sponsors: Capps Rental, Sharp Precision Driving,
Grass-Roots MotorSports, Horsepower Ranch



Pro driver, Spencer Sharp pilots the EVOMS EVT700 997TT on Firebird Raceway as a part of our final EVT700 product validation program. The eDRIVE-R program allows our products to be real world tested by a professional driver. Spencer Sharp is the first eDRIVE-R member to put the EVT700 to the test on the track. Originally tested in December 07 by Luis F (previous page) the EVT700 has been tested more than any other project that EVOMS has launched!

Click the link below to watch the EVT700 track video with Spencer Sharp → [CLICK HERE FOR VIDEO](#)



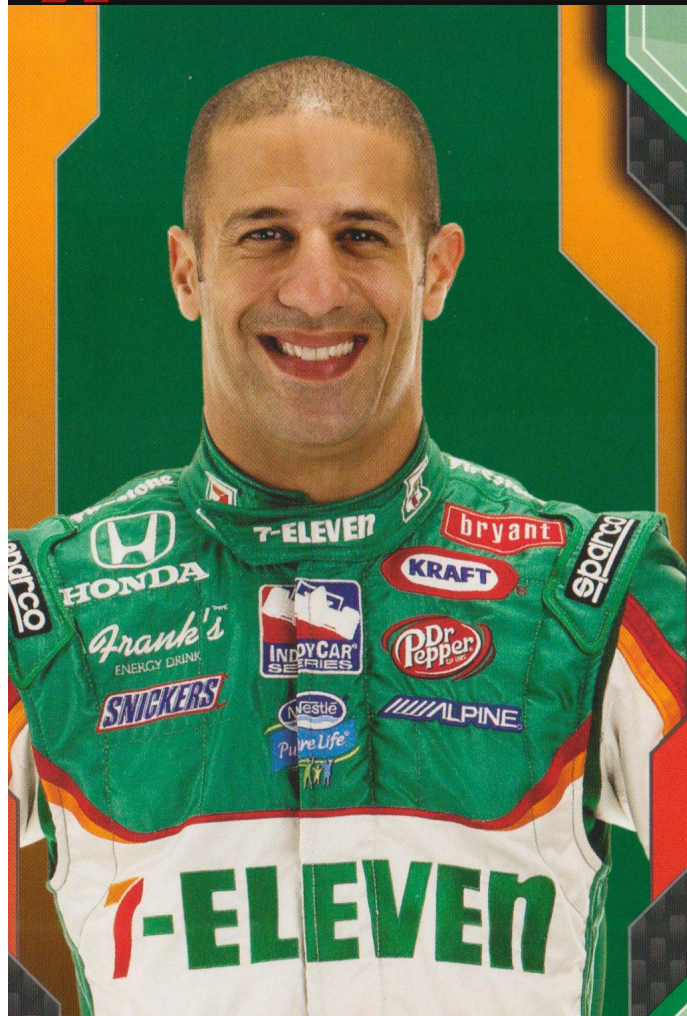


Tony Kanaan

11

Thanks for
The Help!
The Cayenne is
faster than my
Indy Car :)

[Signature]



"I'm very happy with all the work you guys did on my car. The transformation to my 2008 Cayenne turbo has made my car so fast... its unbelievable .. Thank You!"

-Tony Kanaan – Indy Car Champion 2004.



OWN IT - DESIGN IT - RACE IT

Owning the vehicles we design products for is a key component to the success of EVOMS. In order to engineer and test specific products and ultimately complete Performance Systems, EVOMS acquires the vehicle and drives them as enthusiasts do (OK, perhaps a bit harder than most). This is not the industry standard. Our development vehicles undergo a massive transformation during the development process. Each vehicle is continuously evaluated and tested through each phase of development to ensure optimum performance and reliability. Each vehicle we own/ owned, have set the benchmark for the entire industry.

EVOMS creates the path that others follow.



INTELLIGENT UPGRADABILITY



At Evolution MotorSports we know what it takes to create the ultimate upgrades and Performance Systems for the M96/M97 Engines. All of EVOMS Performance Systems use a building block method for completion. As performance needs change, additional upgrade components can be added to each system in stages, culminating in the pinnacle upgrade, the EVOMS RS370.



The EVOMS Cayman Performance Systems utilize the same core components starting with EVOMS^{it} intelligent computer tuning, V-Flow intake and sport exhaust. The foundation power stages offer incredible power gains and enable enthusiasts to expand their performance options without purchasing components that become obsolete when it is time to “evolve” to the next power level. Not only do our Performance Systems build upon one another, they are engineered and manufactured with the highest standards and have been skillfully designed to be optimized today, tomorrow and in years to come. This simple concept is not just innovative, it is just intelligent!



DECISION TIME:

The Porsche Boxster & Cayman are nearly perfect from the minute it is driven off the showroom floor. When making the decision to unleash the hidden potential inside a Porsche, visit or call to consult with an Evolution MotorSports professional or one of the Premier Partners located throughout the world. Find out what others already know:

EVOMS builds the most powerful, reliable and highest quality performance systems in the world.

CAYMAN PERFORMANCE SYSTEMS



Technically speaking, raw power totally dominates, and the RS line of Performance Systems represents a lifetime of experience racing, driving, building and tuning Porsches. The RS370 is the most powerful bolt on proprietary Performance System available. Read on to discover more about the different Performance System for the unique driving experience that is the Porsche. Enter the realm of EVOMS Intelligent Tuning...Insanely Tuned – with upgradeability. Available Boxster S / Cayman S stages include: RS320, RS330, RS350, RS360, RS370



“Paradise is found between cracking the throttle and ANNIHILATING the pavement.”



THE RS350 IS ONE OF THE BEST MODERN PORSCHE
WE'VE DRIVEN ON THE LOOP, AND THE BEST 987...

Pete Stout
-Excellence Magazine



CAYMAN S / BOXSTER S PERFORMANCE SYSTEMS 2009+



The new 2009 Cayman S (320 HP) and Boxster S (310 HP) are now fitted with a direct fuel injection system which was first released on the new 911. These new engines are now controlled by a Siemens SDI3 ECU in place of the Bosch ECU previously found in the Generation 1 Cayman S and Boxster models. This new engine control unit is much more sophisticated than previous controllers and EVOMS is the first and only US based company to successfully tune and offer ECU upgrades for this new platform. We have spent a tremendous amount of time tuning the 997, 987 cars, both with the manual and PDK transmissions, on the dyno as well as in real world street and track conditions.



Our software improves throttle response, horsepower and torque while maintaining incredibly smooth power delivery. Our software upgrade is OBDII compliant and will not cause any check engine lights. Our software upgrade is well within the safety parameters for optimized power with OEM safety features.

Unleash the hidden potential within your engine with an EVOMSiT - Intelligent Tuning ECU upgrade!

RS350

\$4,395

EVOMSiT RS350 Performance Engine Software - Siemens SDI3 - 2009 DFI
EVOMS V-Flow High Flow Air Induction System
Tubi or Cargraphic Sport Exhaust System w/ Secondary Catalyst Delete Pipes

RS340

\$1,840

EVOMSiT RS340 Performance Engine Software - Siemens SDI3 - 2009 DFI
EVOMS V-Flow High Flow Air Induction System

RS333

\$1,495

EVOMSiT RS333 Performance Engine Software - Siemens SDI3 - 2009 DFI



CAYMAN S / BOXSTER S PERFORMANCE SYSTEMS 07'-08'



RS370

\$7,170*

EVOMSit RS370 Performance Software
EVOMS V-Flow High Flow Air Induction System
EVOMS, Tubi or Cargraphic Super Sound Exhaust System
LNE Lower Temperature Thermostat
IPD Competition Plenum - For Enlarged Throttle Valve
Porsche 997 GT3 Throttle Valve
EVOMS CNC Machined Billet Aluminum Underdrive Crank Pulley
EVOMS Stainless Steel Exhaust Manifold/Header Set

RS360

\$4,625*

EVOMSit RS360 Performance Software
EVOMS V-Flow High Flow Air Induction System
EVOMS, Tubi or Cargraphic Super Sound Exhaust System
LNE Lower Temperature Thermostat
IPD Competition Plenum - For Enlarged Throttle Valve
Porsche 997 GT3 Throttle Valve
EVOMS CNC Machined Billet Aluminum Underdrive Crank Pulley

RS350

\$4,125*

EVOMSit RS350 Performance Software
EVOMS V-Flow High Flow Air Induction System
EVOMS, Tubi or Cargraphic Super Sound Exhaust System
IPD Competition Plenum - For Enlarged Throttle Valve
Porsche 997 GT3 Throttle Valve

RS330

\$2,825*

EVOMSit RS330 Performance Software
EVOMS V-Flow High Flow Air Induction System
EVOMS, Tubi or Cargraphic Super Sound Exhaust System

RS320

\$1,350

EVOMSit RS320 Performance Software
EVOMS V-Flow High Flow Air Induction System



*Add \$700 to the prices above to substitute the EVOMS exhaust system (which is included in the RS performance systems, for a Tubi or Cargraphic Exhaust. Subtract \$1500 if you already have a sport exhaust system on your vehicle



CAYMAN S / BOXSTER S EXHAUST COMPONENTS



Tubi Style (Italy) Sport Exhaust System: All Tubi Style exhausts are made with 304-grade stainless steel and are finished with a fully polished surface. The Tubi name is synonymous with Ferrari and that distinctive sound. The Tubi Cayman S / Boxster S offers an amazing Tubi sound while improving HP/TQ.

- Distinctive Tubi Sound without any annoying drone
- Improved horsepower and torque
- Bolt - on installation

\$2195 (07-08)
\$2495 (2009)



Cargraphic (Germany) Sport Exhaust System: Since the mid 80's Cargraphic has developed, dyno tested and produced the world's finest stainless steel high flow exhaust systems. As a system supplier to Manufacturers, High End Tuning Companies and Race Teams worldwide Cargraphic's base in the South-West of Germany is supported by its R+D, Testing and Production departments.

- T304 stainless steel construction
- Maximum flow and performance
- Deep throaty sound

\$2195



EVOMS - Fabspeed (USA) Sport Exhaust System: Our two-can system for the 987 Cayman/Boxster replaces the heavy stock exhaust and secondary catalytic converters with a more pronounced engine sound. System includes dual polished tips and axle pipes which bolt up to the either the stock headers or our headers. Made from T304 stainless steel with C.N.C. mandrel bent tubing for maximum exhaust flow and power.

- T304 stainless steel mufflers w/ C.N.C. mandrel bent tubing
- Saves 10 lbs from the rear of car
- Eliminates 2nd set of unnecessary catalytic converters for more HP/TQ
- Improved sports car sound.

\$1495



EVOMS - Fabspeed (USA) Sport Muffler Tip: Dual outlet BOLT-ON tip for all 987 cars which fits Boxster and Cayman. T304 stainless steel mirror polished. Fit stock OEM Porsche 987 exhaust systems or other aftermarket systems that retain the OEM tip. Please specify 987 Boxster or Cayman. *will not fit the 2009 cars

- T304 stainless steel
- Mirror polished
- Direct replacement

\$495

CAYMAN S / BOXSTER S HEADERS - ECU TUNING



Cargraphic (Germany) Sport Headers w/ High Flow Catalysts: Since the mid 80's Cargraphic has developed, dyno tested and produced the world's finest stainless steel high flow exhaust systems. Cargraphic's base in the South-West of Germany is supported by its R+D, Testing and Production departments.

- Stainless steel manifold / header set with 200 cell tri-metal catalysts.
- Equal length primaries, mandrel bend, collector box with spike.
- OBD2 compliant

\$3295



EVOMS - Fabspeed (USA) Sport Headers w/ High Flow Catalysts: Equal length T 304 stainless steel C.N.C. mandrel bent header pipes for better torque and equalized engine pulsing and maximum exhaust flow. Improves power and torque across the RPM band and dramatically better throttle response. Simple and easy direct bolt-on replacement headers for all stock 987 headers. These headers comply with warranty.

- Mandrel bent equal length primary tubes
- HJS metal catalysts - OBDII compliant
- High flow - velocity merge collectors.

\$2550



EVOMSit. Intelligent Tuning - Performance Software:

EVOMSit software combines our superior mechanical expertise with an unequivocal capacity to calibrate the most complex automotive computer electronics. When you invest in an EVOMSit software upgrade for your vehicle, you will begin to realize our world of intelligent tuning, insanely tuned. You will sit whiteness to the apex of engine performance software for your vehicle. EVOMSit an elite product that has been tested under the most grueling conditions during dyno simulation as well as real world driving on the street / track and through our eDRIVE independent product validation program.

Our stringent testing assures pure, crisp and consistent power in all of the conditions you like to enjoy your vehicle. We spend 100% of our R&D efforts on the development and testing of performance software, period! The combination of our meticulous mechanical expertise, painstaking attention to details and our unequivocal capacity to calibrate the most complex automotive computers, clearly sets us apart in the world software development. EVOMSit performance software represents the apex of technology where pure adrenaline is fused with ULTIMATE PERFORMANCE

- Improved Power and Torque throughout the rev range
- Improved throttle response with smooth power delivery
- Extensively tested on both our AWD dyno as well as on the street and track
- OBDII compliant

\$995 (07'-08')
\$1295 (2009+)



CAYMAN S / BOXSTER S INTAKE - ENGINE UPGRADES



EVOMS – V-Flow Air Induction System: The V-Flow air intake system is designed to significantly improve airflow utilizing the OEM airbox. Our CAD engineered and CNC machined billet aluminum venturi helps funnel more air to increase which increase air flow and velocity. The V-Flow air filter further improves airflow with our “Synthamax” 100% synthetic, Oil less filter media.

- HP / TQ Gain: 6-8 at the wheels - Dyno tested and independently verified
- Installs inside the factory airbox
- Utilize the OEM “ram air” fresh air duct for lower air intake temperatures

\$350



IPD Intake Plenum w/ Optional 83mm Throttle Body: The IPD Plenum is a unique design that dramatically increases horsepower and torque by optimizing air flow efficiency. It eliminates the turbulent air flow by smoothly splitting and diverting the air flow and directing it towards the cylinders at a much higher air speed. This simple bolt-on plenum upgrade provides dyno proven increases in both power and torque throughout the entire rev range.

- Improved HP/TQ throughout the rev range
- Better throttle response
- Optional 83 mm throttle body is available for more flow and power

\$995

\$300



EVOMS – Lightweight Under drive Pulley :

Our lightweight CNC machined billet aluminum pulley reduces engine drag by slightly reducing the overall pulley diameter. This reduction in size slows down the overall belt speed slightly which reduces accessory loads to increase power.

*Includes pulley extraction tool. slight modification is required to fit our pulley

- Reduces engine drag
- CNC machined billet aluminum
- Improves throttle response, HP/TQ

\$300



EVOMS – LNE 160 Degree Thermostat : Our direct replacement thermostat reduces the opening temperature by 20 degrees for a cooler running engine. The OEM thermostats have about a 7% variance which could translate to an opening temperature of 195 degrees. Our units have about a 1% variance for precise engine cooling for any performance 987.

- 160 opening temperature
- Cooler engine temperatures
- Direct replacement

\$200



The Science Behind Harnessing Increased Power and Torque

EVOMS / Sachs Race Engineering (SRE) Performance Clutches deliver more transmittable torque, more stability, longer life and superior thermal resistance as compared to the stock clutch systems. Our clutch packages have been designed for specific applications depending on engine power / torque and driving style. We have dedicated years of testing to ensure our customers get the exact clutch system to suite their needs. Our clutch systems have been developed not only for our highly tuned street vehicles but for vehicles competing in motor sports racing, endurance racing and drag racing.

The wide range of Performance Clutches, developed, designed and tested by EVOMS are more expensive than most clutch systems on the market. Quality components that have been carefully analyzed and tested are not cheap. Rest assured that in the long run, our clutch systems will out perform and out last cheaper, inferior clutch kits that are available. The amount of money saved by purchasing a clutch kit that has to be removed due to poor performance or failure will cost more time, money and headaches in the long run. Our properly designed clutch systems have the following essential advantages:

- ▶ Utilizes extremely high strength and properly matched friction materials - helps deliver more transmittable torque
- ▶ Incorporates higher pressure plate clamping forces - helps deliver increased HP/TQ without slippage
- ▶ Maintains excellent clutch engagement characteristics. Some applications are like stock
- ▶ Designed specifically for different power levels, driving styles and applications
- ▶ Features heat treated friction surfaces for superior thermal resistance
- ▶ Direct replacement for the OE clutch system
- ▶ Increased life span

Design

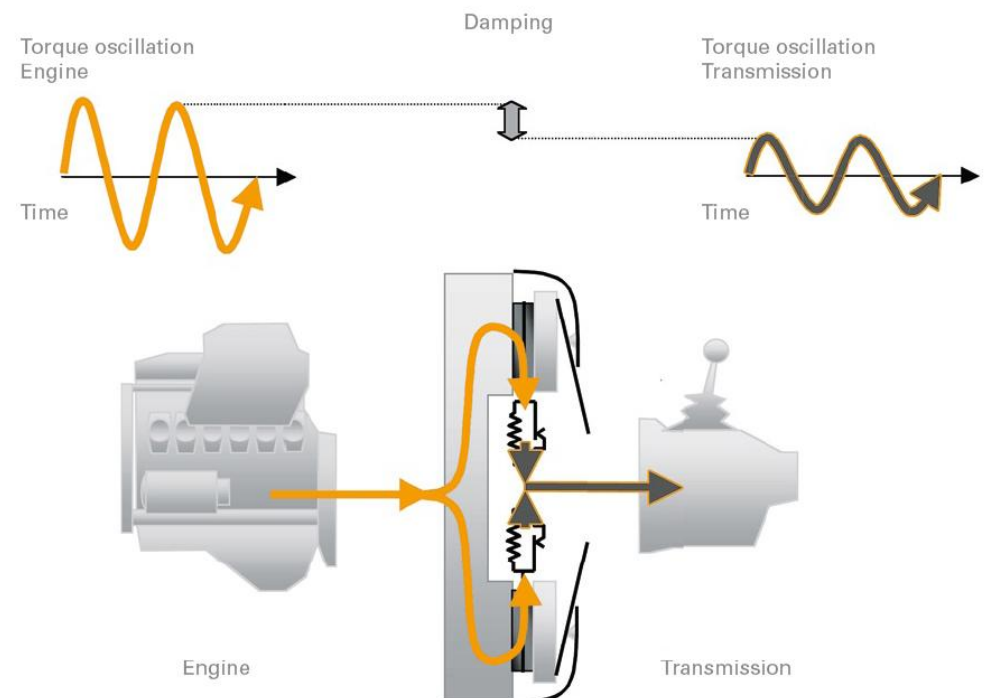
The latest CAE equipment, such as Pro-Engineer (3D Design) and FEM (Finite-Element-Method) are used to design custom clutch configurations to each individual application. We also design and build Diaphragm Springs and all key components of the clutches to realize ultimate performance.

Bench Test

To evaluate the reliability of our products properly, careful analysis and tests are conducted in each vehicle and on test benches which have been developed by EVOMS.

Assembling

Our Performance Clutches are assembled by hand. This guarantees the highest quality and accuracy in clamping load and release characteristics.



“Better Performance Through Innovative Technology”

PERFORMANCE CLUTCH SYSTEMS

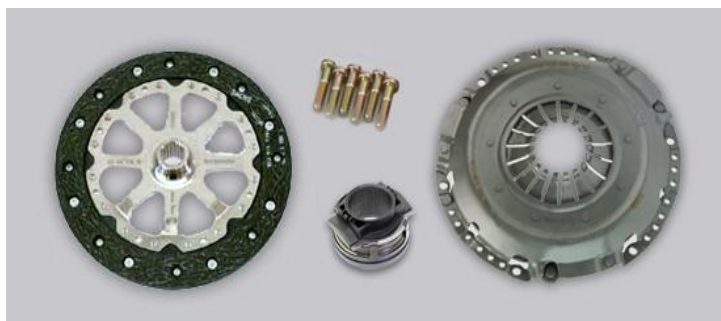


EVOMS / SRE Stage 1 Clutch Kit:

Sport "999" pressure plate with 3000 lb. of clamp force. Mated with the OEM Organic Lined Clutch Disk for 100% stock drivability. Capable of holding up to 420 HP/TQ

- High Clamp Force Pressure Plate
- OEM Clutch Disk
- TO Bearing & Hardware

\$1795



EVOMS / SRE Stage 2 Clutch Kit:

Sport "999" pressure plate with 3000 lb. of clamp force. Mated with a solid hub, lightweight, high friction material lined clutch disk for excellent, almost stock drivability. Perfect for street driving and mild track use. Capable of holding up to 490 HP/TQ

- High Clamp Force Pressure Plate
- SRE Lightweight Solid Hub Disk - High Friction Material Lining
- TO Bearing & Hardware

\$2395



EVOMS Aluminum Lightweight 18 lb. Flywheel:

Our lightweight flywheel conversion eliminates ~ 10 lbs. of rotating mass at the crank. This translates to a faster revving engine for improved throttle response. Our flywheel is a direct replacement for the OEM dual mass and should be used in conjunction with our clutch systems listed below. We have performed extensive testing and our clutch packages are tried and true for optimum performance and drivability.

*An increase in transmission noise is common with this upgrade especially at idle engine speed

- Weighs 18 lbs. as compared to 29 lbs. for the OEM unit
- Improves throttle response and engine revving
- Replacement friction surface available

\$1195

\$210



EVOMS / SRE Stage 2 Clutch Kit - Designed For Use With EVOMS Aluminum Flywheel :

Sport "999" pressure plate with 3000 lb. of clamp force. Mated with a sprung hub motor sport disk with a high friction material lining. Perfect for street driving and track use. Capable of holding up to 500 HP/TQ (Flywheel Sold Separately)

- 3500 lb. Clamp Force Plate (9.4 Lbs.)
- SRE Sprung Hub Disk - High Friction Material Lining
- TO Bearing & Hardware

\$2195

PERFORMANCE COMPONENTS



<u>Air Induction Components</u>	
EVOMS V-Flow High Flow Air Induction System	\$350
EVOMS Replacement V-Flow Air Filter	\$95
IPD Intake Plenum - For Standard Throttle Body	\$995
IPD Competition Intake Plenum - For 82mm Throttle Body	\$995
Bosch 82mm Throttle Body	\$295
<u>Exhaust Mufflers & Exhaust Tips</u>	
Cargraphic Super Sound Exhaust without Catalysts (OBDII Compliant) - 2007-2008	\$2,195
Tubi Stainless Sport Exhaust System without Secondary Catalysts (OBDII Compliant) 2007-2008	\$2,195
Tubi Stainless Sport Exhaust System without Secondary Catalysts (OBDII Compliant) 2009+	\$2,495
EVOMS-FSM Stainless Steel Muffler System	\$1,495
EVOMS-FSM Stainless Steel "Twin 3" exhaust tip	\$495
<u>Exhaust Header / Catalysts</u>	
EVOMS-FSM Stainless Steel Headers w/ High Flow Catalysts	\$2,565
EVOMS-FSM Stainless Steel RACE Headers without Catalysts	\$1,965
<u>Engine Accessories</u>	
EVOMS CNC Machined Billet Aluminum Under drive Crank Pulley*	\$300
LNE Motorsport 160 degree Temperature Thermostat	\$200
Billet Spin-On Oil Filter Adapter	\$140
LNE Deep Sump Kit: including pickup tube spacer and installation hardware	\$280
Denso Double Platinum Spark Plugs - Heat Range Specific for 987 Performance Systems	\$70
<u>Clutch Kits For Solid Aluminum Flywheel:</u>	
EVOMS / SRE Stage 2+ Clutch Kit: - Up To 500 HP - "999" Plate (9.4 Lbs.), MSP High Friction Coefficient - Sprung Hub Disk, TO Bearing, Hardware	\$2,195
<u>Clutch Kits For OEM Dual Mass Flywheel:</u>	
EVOMS / SRE Stage 2 Clutch Kit: - Up To 490 HP - "999" Plate (9.4 Lbs.), MSP High Friction Coefficient Disk, TO Bearing, Hardware	\$2,395
EVOMS / SRE Stage 1 Clutch Kit: - Up To 420 HP - "999" Plate (9.4 Lbs.), OEM Organic Friction Disk, TO Bearing, Hardware	\$1,795
OEM Replacement Clutch Kit: - Up To 350 HP - OEM Plate, OEM Disk, TO Bearing, Hardware	\$1,295
<u>Flywheels</u>	
EVOMS 18 lb. Sport Aluminum Flywheel	\$1,195
EVOMS Replacement Aluminum Flywheel Friction Surface	\$210
OEM Dual Mass "LUK" Flywheel	\$1,095
<u>EVOMS Shifter Components</u>	
EVOMS 40% Billet Shorter Shifter	\$260
EVOMS 40% Billet Shift Link	\$100

BRAKE AND CHASSIS COMPONENTS



Cayman S / Boxster S Rotor Upgrade - GiroDisk::

GiroDisk rotor upgrade is a must for any modified 987 or cars that are used on the track. Dramatically improves braking force by improving caliper leverage on a larger diameter rotor. Reduced rotor weight further improves unsprung weight and improves handling. We have tested these rotors on our company cars stand behind the quality and performance. Available in complete sets of (4) rotors with gas slots or slotted and cross drilled (pictured)

Rotor Size [mm] - Front / Rear: OEM 317/298 | GiroDisk 340/325

Rotor Weight [lbs.] - Front / Rear: OEM 19.85/14.00 | GiroDisk 17.05/14.80

-Gas Slotted GiroDisk Set: \$2200

-Gas Slotted & Cross drilled GiroDisk Set: \$2350



EVOMS Cayman S / Boxster S Adjustable Front and Rear Sway Bars:

Our increased diameter sway bars offer better torsional rigidity for improved handling. Our sway bars also adjustable which helps reduce under steer and reduces body roll. Our sway bars are a must for any modified 987 or cars that are used on the track.

-Front Sway Bar: \$300

-Rear Sway Bar Kit: \$300



EVOMS Cayman S / Boxster S Adjustable Front and Rear Drop Links:

Our adjustable drop links are stronger and offer the ability to preload the OEM or our aftermarket sway bars. Machined from billet aluminum with spherical bearings. Sold in pairs of (2)

-Front Sway Bar Drop Links: \$275

-Rear Sway Bar Kit Drop Links: \$275



EVOMS Cayman S / Boxster S Carbon Fiber Front Strut Tower Brace :

Our front carbon fiber and aluminum strut tower brace helps to reduce front suspension deflection. The billet aluminum ends bolt to the top of each front strut mount, which will reduce any suspension movement for improved handling.

-Front Aluminum & Carbon Fiber Strut Tower Brace: \$260

-Rear Aluminum Shock Tower Brace (Boxster/S ONLY) \$225 (not pictured)



BIG BRAKE UPGRADE & CONVERSION PARTS



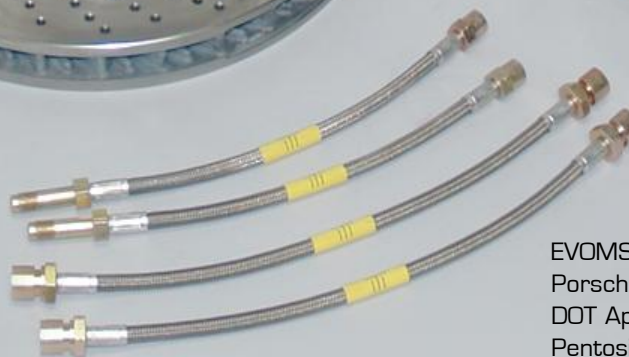
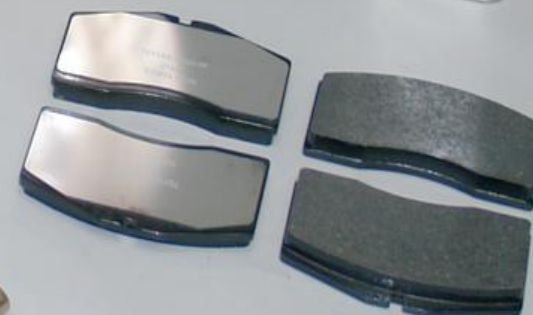
EVOMS 325 MM "Big Red" Front Brake Upgrade Kit:

The OEM Brakes on the 987 are good but at only 305MM in diameter, there is room for improvement. Our Twin Turbo brake conversion utilizes a 325 MM OEM x-drilled rotor and custom CNC machined rotor hat. Our brake kit includes OEM Porsche Twin Turbo "Big Red" Calipers for a tremendous braking improvement. The increased rotor diameter as well as the larger caliper / pad surface area will drastically improve braking while maintaining a firm pedal feel. This is a first of its kind brake upgrade system for the Cayman.

Upgrade Includes:

- Front Porsche Twin Turbo Calipers (Available in both RED and Black)
- 325 mm Twin Turbo balanced and X-drilled rotors
- Cool Carbon or OEM "no squeal" street brake pads
- DOT approved stainless steel braided brake lines
- OEM Pentosin high performance race brake fluid
- EVOMS CNC machined rotor hub adapters
- Aircraft grade mounting hardware

Price: \$2695



Build Your Own Big Brake Kit Components

- EVOMS CNC Machined Aluminum Rotor Hats \$450 / set
- Porsche 325 MM OEM X-Drilled Rotors \$500 / pr
- DOT Approved Stainless Steel Brake Lines (4) \$150 / set
- Pentosin Racing Brake Fluid \$25 / Liter
- Cool Carbon Street Brake Pads \$180
- Pagid Racing Brake Pads \$220



Evolution MotorSports Signature Components – Vehicle Gear

Our line of exclusive signature components make an excellent compliment to all Evolution MotorSports vehicles. Some of our EVOMS brand products are designed with performance in mind while others are for pure aesthetics. The products photographed below are a sample of our line of signature components. Other components include: billet aluminum oil, coolant caps and fuel caps, carbon fiber shock tower braces, carbon fiber door sills, billet aluminum hood and decklid badges to name a few. Additionally, we offer custom interior coach work with the finest leathers, suede's and Alcantara. We offer many different interior upgrades and accents to further distinguish your Evolution MotorSports performance vehicle.



EVOMS Aluminum Pedals: Our designed pedals offer an aggressive look while keeping the driver's feet securely planted. The rubber inserts improve pedal grip for more precise footwork while heel and toe shifting. Available for both manual or tiptronic vehicles and offered in aluminum color (shown) or all black \$220



EVOMS Billet Short Shifter: Our 35% shorter replacement shifter is CNC machined billet aluminum and adds a more precise shift action for tighter and crisper shifts. Shift effort is slightly increased making the overall shift throw feel more connected. Direct replacement \$260



EVOMS ShiftLink – Aluminum Shifter Coupler: Our ShiftLink is CNC machined from 6061 billet aluminum and has a machined delrin bushing which is 10 times stronger than the OEM plastic shifter. Our ShiftLink is a direct replacement and is GUARANTEED never to break. \$100



EVOMS Leather / Carbon Fiber Leather Steering Wheel: Our 340mm Sport Steering Wheel with new Airbag is pictured in black leather and carbon fiber. We offer other colors and styles to suit your interior configuration. Improved grip and feel for a more connected link between you and your machine. Direct Replacement \$1195 - \$1695



EVOMS Aluminum Oil Filler Cap: Our replacement oil filler caps are CNC machined from billet aluminum, thermo coated with a wrinkle black finish and are accented with stainless steel button head cap screws. Available with either the OEM "oil can" or "EVO" engraved logo. Direct replacement \$80



EVOMS Aluminum Coolant Cap: Our replacement coolant filler caps are CNC machined from billet aluminum, thermo coated with a wrinkle black finish and are accented with stainless steel button head cap screws. Direct replacement \$80



YOUR LEFT BRAIN CONTROLS YOUR RIGHT FOOT



Glance out the windshield. The open road summons your attention. Confident hands grasp the steering wheel of your Insanely Tuned, Evolution MotorSports vehicle. Your left brain commands your right foot. The engine roars. Your heart rate soars. As you accelerate, enter into another dimension of MIND WARPING PERFORMANCE with confident control. Enjoy the rush.

Live the experience Evolution MotorSports creates.



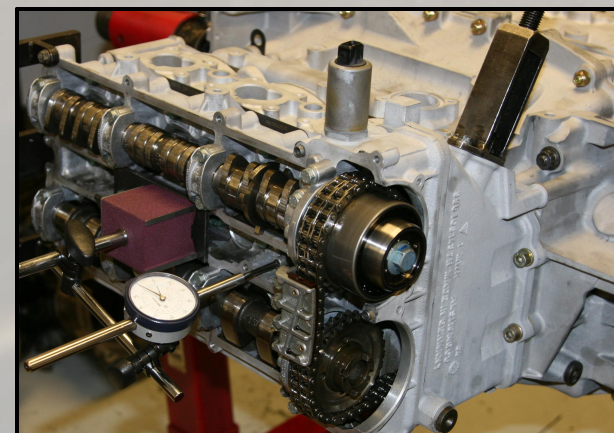
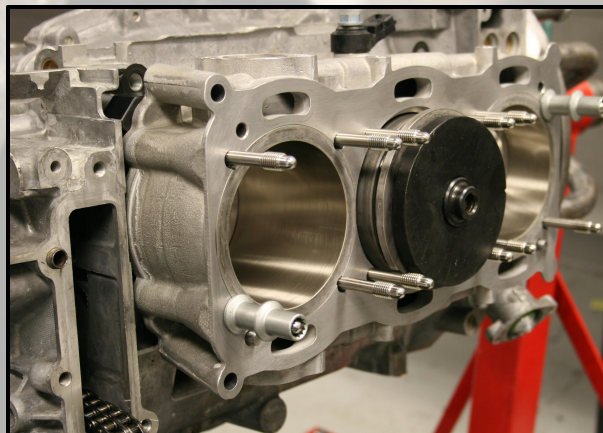
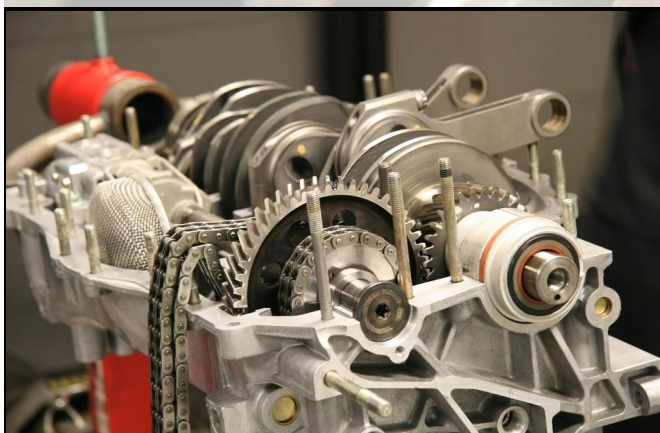


EVOMS ENGINE DEVELOPMENT / ASSEMBLY DIVISION



Evolution MotorSports purpose built engine facility is equipped with all of the factory Porsche tools as well as an abundance of custom tools, measuring tools and virtually every engine assembly tool that has been made for Porsche engines. John Bray, master Porsche technician, is in charge of engine development, engineering and engine assembly at EVOMS. Mr. Bray has built more than one hundred 996, 997, [M96/M97] 996TT & 997TT, engines in the past 8 years and has been responsible for many of the technical advances and the "evolution" of the water-cooled, 4 valve, flat six engine. The EVOMS engine development team has practically re-engineered most of the internal engine components to withstand and endure the most brutal punishment. Our engine building processes have been perfected throughout the years which have contributed to our many accolades and world record achievements.

We have recently partnered with LN Engineering and Flat 6 Innovations who have created a new version of the M96/M97 engines that are built with increased power, strength and reliability. These properly engineered engines can withstand severe punishment and are available with increased displacement up to 4.0 liters. The approach taken was that of performance and reliability and not mass production and cost savings which was the original approach by Porsche. Allow us to design and build an engine that suites your driving style and application.

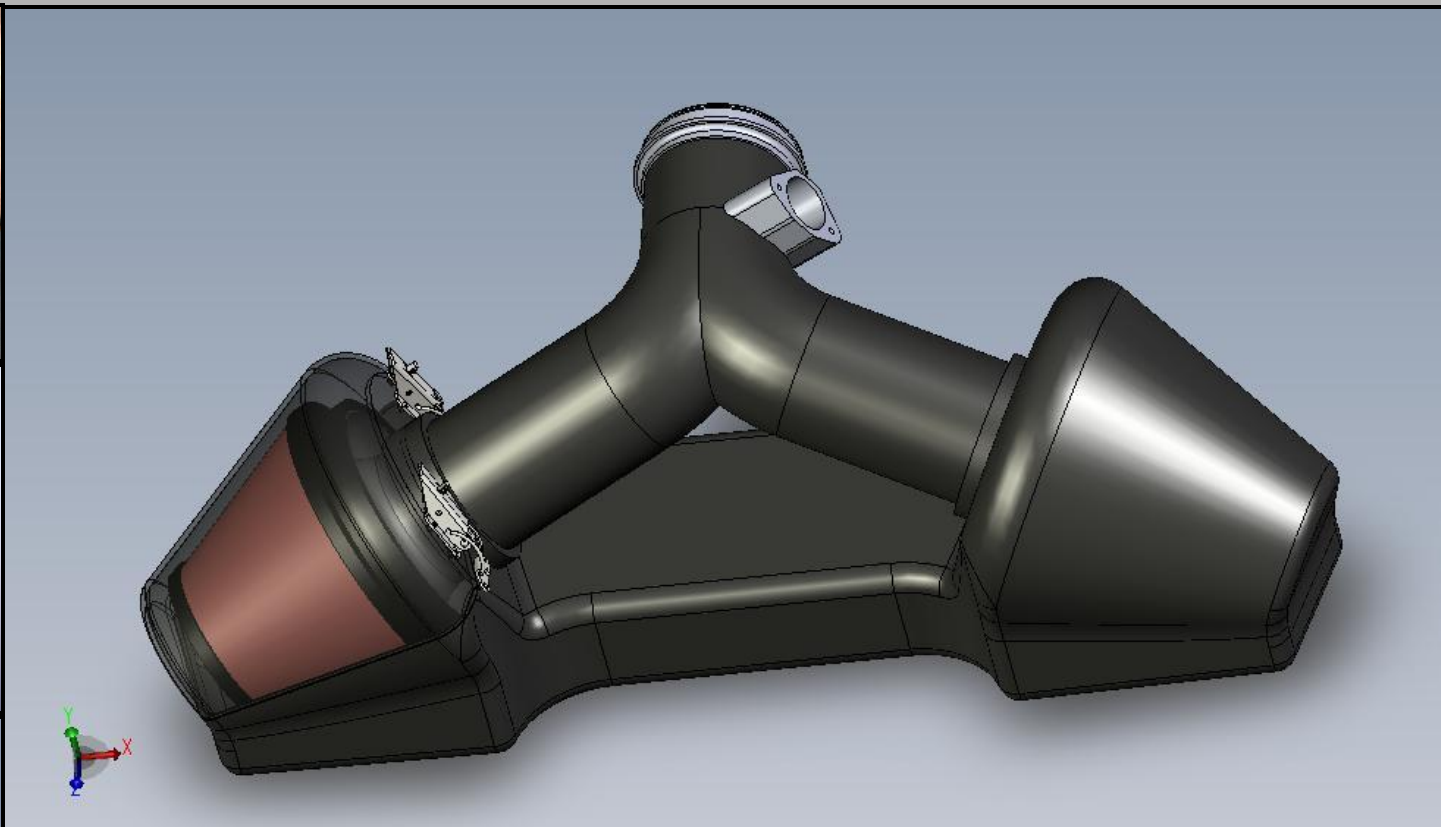
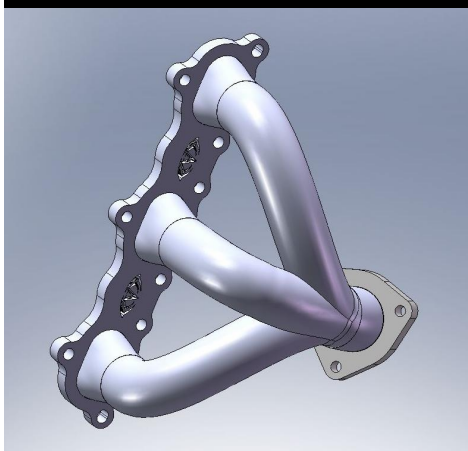
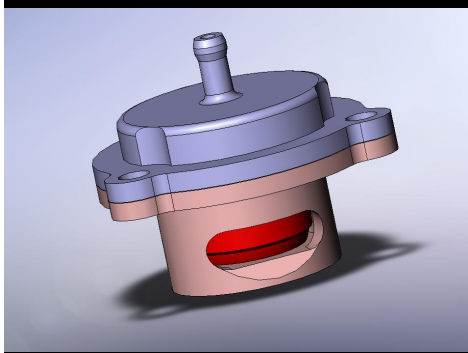
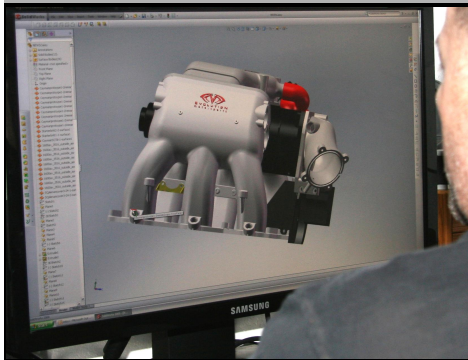




EVOMS RESEARCH and DEVELOPMENT DIVISION



Evolution MotorSports research, development and design team utilizes advanced 2D and 3D Solidworks CAD software. This allows us to virtually engineer and develop the majority of the products that we manufacture. Once a component is analyzed by our design team, a 3D computer model is produced which can be changed, modified and tested prior to prototyping and application testing on a vehicle. This improves the accuracy of prototyping as well as improves the quality, accuracy and final fitment of our products. Additionally, our CAD components are computer tested for strength, flow and compatibility with other components we design which further improves the quality and final results.



Head of R&D at EVOMS is Daryl Williams, a 25 year veteran in automotive product design. Daryl spent the past 14 years working with Porsche cars specifically and has brought his vast knowledge of "Porsche thinking" into the products he and founder Todd Zuccone design. EVOMS spends countless hours prototyping, improving, testing on the street, Dyno and track, each component that make up EVOMS Performance Systems. Our insane dedication to perfection, our cutting edge technology and our ingenious design team all help make EVOMS the true leader in aftermarket Porsche performance.

EVOLUTION MOTORSPORTS - FABRICATION

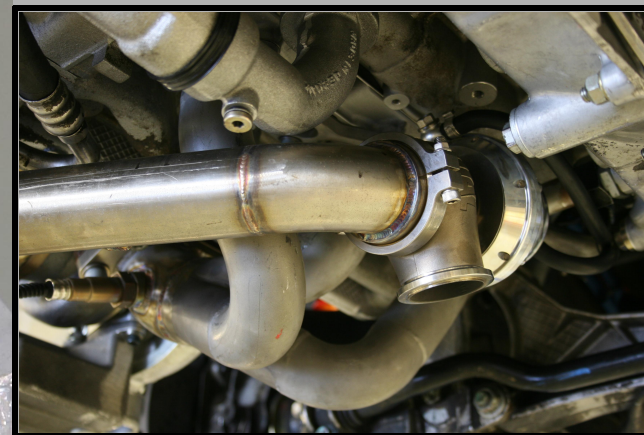


Evolution MotorSports fabrication division is where many of our final products begin life. This department of EVOMS is responsible for all of the prototyping during the design and test phase of product development. The fabrication division is also responsible for the production of many final EVOMS products that end up in our Performance Systems and on our customers cars. Another function of this department is the design and fabrication of custom roll bars / cages, custom headers and exhaust systems as well as custom intercoolers and induction plumbing.

The fabrication department is run by longtime employee and master fabricator, Al Berini who has been with EVOMS since 1998. Mr. Berini is "insane" with his attention to details, product preparation and his masterful creativity. He works directly with the R&D department and is involved with many "special operation" projects which are created with Mr. Berini, engineering and R&D departments.



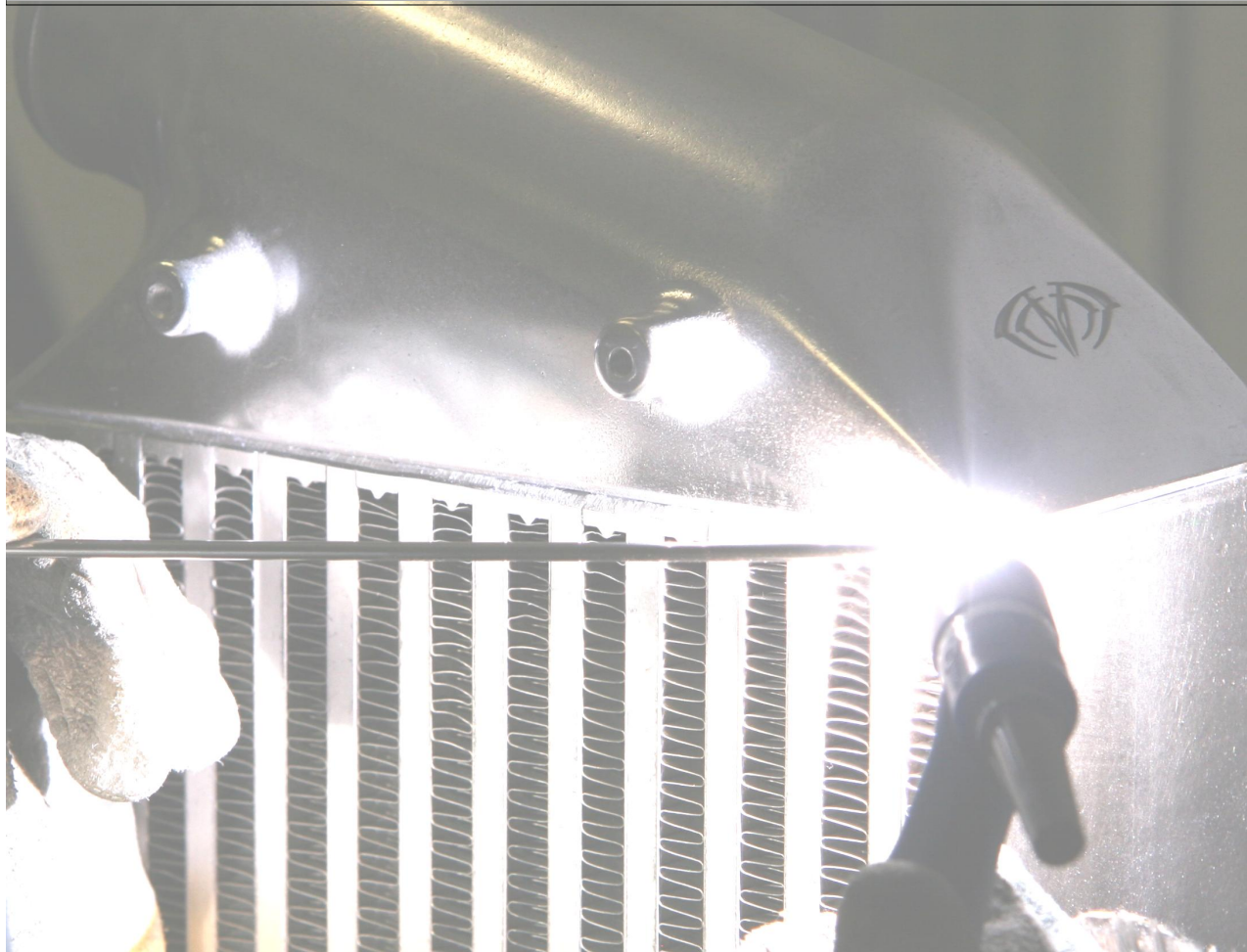
▶ Custom Roll Cages and Chassis Stiffening



▶ Custom Exhaust and Headers Systems



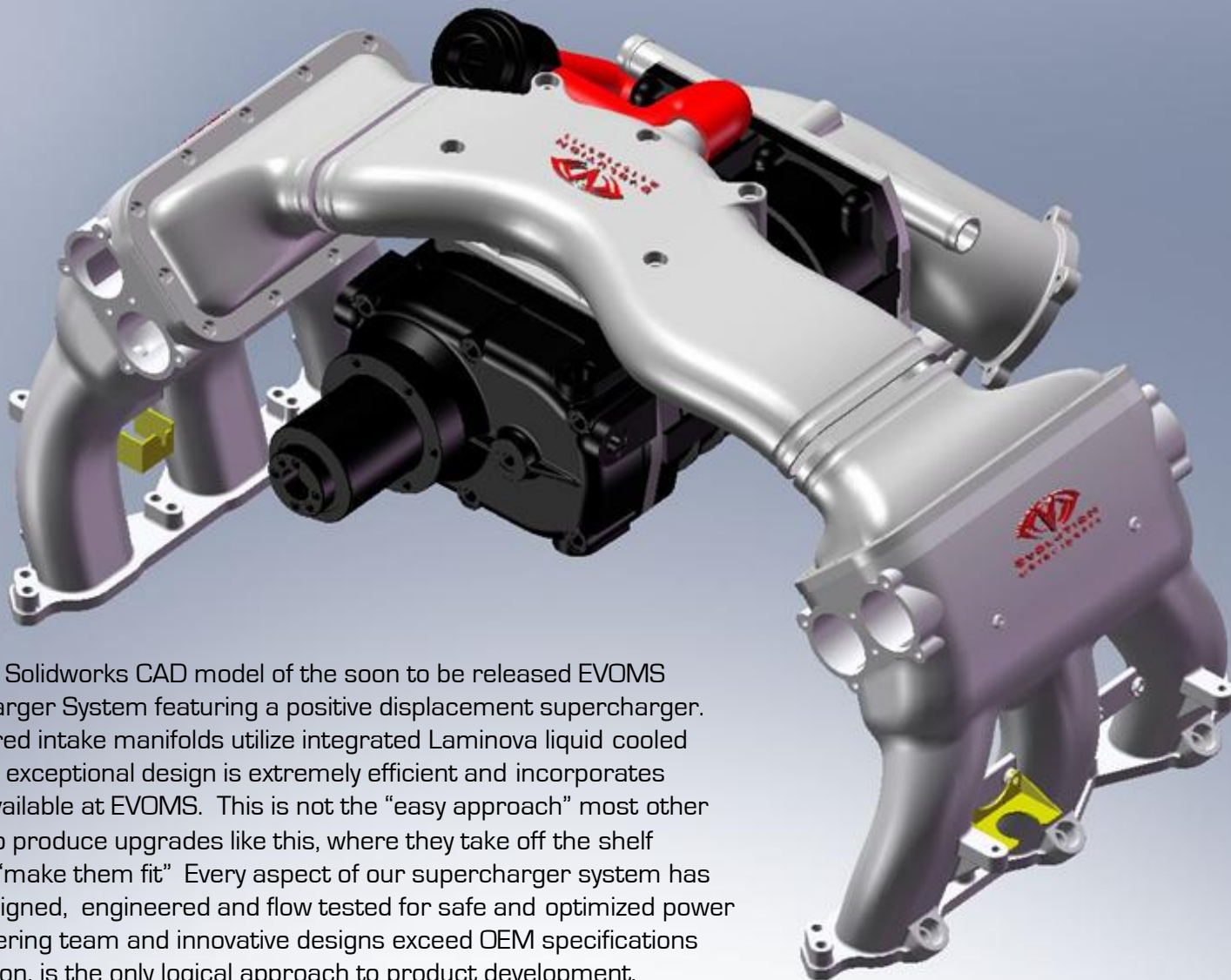
▶ In House Prototypes and Production



EVOMS SPECIAL OPERATIONS DIVISION



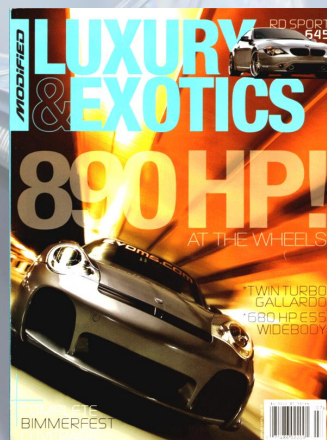
Our "Special Operations" design team helps turn dreams into reality. From 370 HP street cars to 600 HP forced induction MONSTERS, if it can be done, EVOMS has already dreamt and created it in one way or another. Our methodical approach, unmatched experience, insane quality and attention to detail allow creations with limitless possibilities. Don't allow your dreams to become nightmares because of inferiority.



Pictured here is a Solidworks CAD model of the soon to be released EVOMS Cayman Supercharger System featuring a positive displacement supercharger. Our CAD engineered intake manifolds utilize integrated Laminova liquid cooled intercoolers. This exceptional design is extremely efficient and incorporates technology only available at EVOMS. This is not the "easy approach" most other companies take to produce upgrades like this, where they take off the shelf components and "make them fit" Every aspect of our supercharger system has been properly designed, engineered and flow tested for safe and optimized power gains. Our engineering team and innovative designs exceed OEM specifications which, in our opinion, is the only logical approach to product development.



Click on this link: www.evomsit.com/press_main.htm
to view the EVOMS magazine features





EVOLUTION MOTORSPORTS PREMIER BSD PARTNERS



Evolution MotorSports Premier BSD Partners are equipped to sell, install and service the majority of EVOMS products and performance systems. All of our BSD Partners are equipped with the tools to perform on site EVOMS^{it} software flashing and have been thoroughly trained by EVOMS in this area of business. These companies possess a high technical knowledge of our products and services and share a dedication to performance perfection and customer satisfaction.

MAXRPM
MotorSports
Bremerton, WA

Sharkwerks
Freemont, CA

Stuttgart
Performance
Costa Mesa, CA

All German Auto
Escondido, CA

EVOMS^{it}
Intelligent Tuning
Tempe, AZ

Evolution MotorSports
Tempe, AZ

Autodynamica-USA
Houston, TX

MotorSport Collection
Miami, FL

Rennsport-One
Ft. Lauderdale, FL

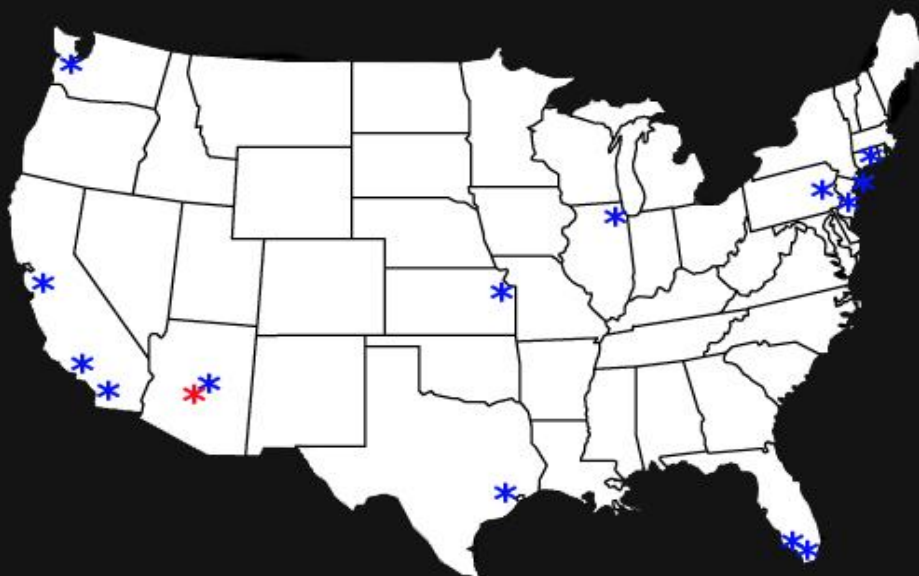
DSXtras
East Hartford, CT

TKX Performance
Huntington St. NY

Legend MotorSport
Massapequa, NY

Fabspeed Motorsport
Ambler, PA

Bodymotion
Ocean Township, NJ



International

Regal AutoSport - UK
Southampton, UK

EXELIXIS - Greece
Thessaloniki, Greece

Autodynamica - Mexico
Mexico City, Mexico



DEVELOPMENT PARTNERS

Evolution MotorSports partners with key performance companies that share our obsession with high performance. Our partners play a strategic role in testing and offer feedback during our product development and validation process. These companies have been trained by EVOMS, they have a company development car which has been upgraded with EVOMS Performance Systems, have factory tools to perform complete engine rebuilding, are authorized warranty centers and or have an in house dyno facility. These companies have offered a tremendous amount of feedback and have helped to create the final products and Performance Systems that EVOMS currently offers.

USA

Sharkwerks - CA www.sharkwerks.com

The MotorSport Collection - FL

MAXRPM MotorSports - WA www.maxrpmmotorsports.com

International

Regal AutoSport - UK www.regal-auto.co.uk

Autodynamica - Mexico www.autodynamica.com

Exelixis - Greece www.dynoexelixis.gr



2009 Cayman S DFI - PDK RS350

MARKETING PARTNERS

Evolution MotorSports partners with key marketing sponsors that share our obsession with performance and help with the growth of business. We appreciate all their support and encourage our customers to do the same.

Excellence Magazine
www.excellence-mag.com

AutoWeek
www.autoweek.com

StreetFire.net
www.streetfire.net

TeamSpeed.com
www.teamspeed.com



EVOMS SELECTED PERFORMANCE WHEELS



Nutek Wheels - California, USA



Unlike many companies today that are merely “marketers” of wheels produced by some offshore factory in a remote location of the world, Nutek is in fact the “manufacturer” of their entire line of wheels. More to the point, their wheels are made in the USA, where Nutek can closely oversee the production and quality processes that define every Nutek wheel. While we believe this to be essential, the real story lies in what’s behind the scenes, owners with more than 40 years of combined experience. One of our owners was the founder of HRE, a company well known as an industry leader in three piece modular wheels. Prior to selling the company 1998, he invested nearly 20 years in developing the technology that has set the industry standard for quality and excellence in modular wheel products.



It is no secret that Nutek has the experience to build quality three piece wheels. With so many companies getting into the three piece wheel business, we realized that it is essential for a wheel company that we align with EVOMS should be well apart from the rest of the pack. Nutek is passionate about manufacturing wheels for the serious motoring enthusiasts that stand above all others. Highest quality, the most innovative designs and the most “unique finishes” available in the wheel industry today clearly set Nutek in a league of their own when it comes to custom 3-Piece wheels – where traditional limits do not apply. Porsche Sizes: 19” & 20”. Other applications to 24”

FIKSE Forged Modular MotorSports Wheels - Washington, USA

Since 1992, Fikse USA has been creating wheels that are lighter, stronger, and built to a higher standard. Each design takes the art and science of wheel construction to a new level. Available in an array of styles, fitments, and finishes, all Fikse wheels are manufactured exclusively with advanced aerospace materials and processes. From their popular Forged Modular™ wheel line to their specialized racing wheels, the Fikse philosophy is to build upon a sound engineering foundation as the basis for excellence.

From start to finish, their design process leads the industry with rigorous real-world testing and certification to the highest global standards. An ongoing commitment to research and vigorous MotorSports program drive continuous improvement in their methods, materials, and processes. Attention to engineering fundamentals also tends to produce the most visually pleasing wheels. This painstaking design effort results in a whole greater than the sum of its parts: a wheel that both appeals aesthetically and performs competitively at the highest level. An investment in Fikse wheels is an investment in quality. Every step of the way, Fikse USA specialists can help make the style, fitment, and finish choices that compliment your personal driving goals. Forged 1-Piece and Forged 3-Piece Wheels. Porsche Sizes 17”. 18” & 19”





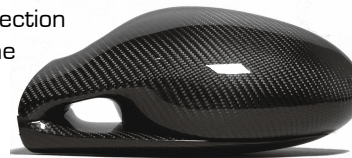
Race Preparation

Preparing a vehicle for a race event requires special attention to details by technicians who understand motor sports and race their personal vehicles. At Evolution MotorSports we are passionate about racing and we compete with our vehicles on a regular basis. The same is true for our customers who book appointments for race prep before these precious days to ensure safety and optimum performance of their vehicle. From a simple brake pad and tire swap, to chassis setup, roll bars and racing seats, we handle the details for all track events requirements. We also offer track side support and driver coaching which can help to fine tune both the driver and vehicle. After race events, we service the vehicle, reverse the process and perform detailing services to have the car looking like new for street enjoyment. Some items and services we offer include: bolt in roll bars, 5-point safety harnesses, fire extinguishers, race seats, race brake pads, race brake rotors, high temperature brake fluids, race wheels and tires, corner balancing, track alignments, etc. Inquire for prices, specific details and custom tailored track packages.



Aerodynamic & Aesthetic Enhancements

We offer a wide variety of carbon fiber body enhancements as well as complete aerodynamic upgrades using the finest components available. We distribute TechArt aerodynamic components as well as only the finest aftermarket body components for street or race. Our paint and auto body facility is accustomed to working with OEM and aftermarket components which ensures the installation and final fit and finish is second to none. We are obsessed with perfection especially when it comes to this aspect of the upgrade process.



PILOTI DRIVING SHOES

Piloti is Italian for "racing drivers". No truer expression could be found for Piloti shoes. Kevin Beard, founder of Piloti Shoes, used his background in biomechanics and design to create a shoe that uses an exclusive, patented Roll Control™ heel Technology.

After a few years of developing top selling products for Reebok® and K-Swiss®, Kevin wanted to get back to the cars and racing he loved. In 1999, he left his director's post at K-Swiss to pursue something he always wanted to do: Create a line of authentic driving shoes that would not only be innovative in how they perform in fierce racing conditions, but also stylish and comfortable enough for the street. His passion became known as Piloti. There are many different styles available designed for pure race or style and comfort. www.piloti.com





EVOMS OTHER PRODUCTS AND SERVICES



Vehicle Clear Bra, Window Tinting, Detailing & Restoration

When temperatures reach 115+ degrees, 3M products help protect against the sun's heat as well as road rash from stones on the street or track. Evolution MotorSports only sells and installs the highest quality products from 3M and guarantee all of our services. We provide a complete protection package for vehicle interiors and exteriors with our extensive assortment of products and services.

- ▶ 3M™ CRYSTALLINE Window Tinting
- ▶ 3M Clear Bra™ for Automotive Paint and Windshield
- ▶ Immaculate Dent Removal
- ▶ OEM Windshield Replacement
- ▶ Full Interior and Exterior Detail Services
- ▶ Full Exterior Paint Protection and Restoration Services
- ▶ Wheel Refinishing and Repair
- ▶ Tail-light Tinting

Vehicle Electronics

Evolution MotorSports knows vehicle audio and electronics. The company's VP has more 20 years of experience in the car audio field. We can help determine the best components and arrange for our mobile electronics installers to seamlessly integrate virtually any upgrade imaginable. From "stealth" radar systems to complete video and subwoofer systems, we have it covered.

- ▶ Audio/Video and Vehicle Electronic Upgrades
- ▶ iPod Integration
- ▶ Built in Radar Detectors using Escort & K40
- ▶ Custom Subwoofer Systems

Vehicle Sales & Pre-Purchase Inspection

With EVOMS Vehicle Sales we bring buyers and sellers together. Evolution MotorSports can be the one phone call to make, to acquire a certain dream car, or to allow our professional marketing team sell a car to make space in the garage for the next big project. The EVOMS team will arrange for photos, videos, magazine advertising and a full barrage of web marketing, assuring the right buyers see the right vehicles. We can even arrange for the vehicle to be displayed in our 6000 SF showroom. Recent EVOMS consignments have sold in Norway, Dubai, New York and Finland. Another service we offer is a complete vehicle analysis and mechanical inspection using our comprehensive and proprietary 240 point EVOMSi inspection program. Pre-purchase inspection is critical with high performance vehicles and we are experts! Never buy a dream car until it is confirmed to not be a nightmare!

Vehicle Storage & Transportation

For those customers that can not stand the thought of their vehicle being left alone all summer while they're enjoying the cool weather in the Northern Territories, EVOMS offers vehicle storage and our extensive concierge services. We offer a wide variety of different storage and maintenance programs suit any needs. Additionally, if vehicle transportation is required, EVOMS can transport vehicles coast to coast in our enclosed transporter and we work with the most reliable logistics companies to ensure safe and prompt delivery nationally and internationally. Inquire about these EVOMS exclusive concierge services which have been designed to take the headache out of the luxury performance vehicle experience.

Maintenance, Service & Monthly Visits

Most EVOMS customers stop by once a month, just to see what is new in the showroom or to witness transformations in the shop. The rest stop by for regular maintenance and service work. Remember, EVOMS builds Insanely Tuned Luxury Exotics and we have all of the OEM diagnostic tools, equipment and expertise to perform any work including oil changes, clutch replacements, belts, brakes and ANY other mechanical service required. Before a trip, stop by and in less than an hour, a fine tune, topping off and getting ready was never quite so.. Fun!

- ▶ Routine Service, Maintenance & Performance
- ▶ Dyno Services and Tuning
- ▶ Complete Engine & Gearbox Rebuilding
- ▶ Custom EVOMSi ECU Software Tuning (All Makes and Models)
- ▶ 4-Wheel Alignment and Corner Balancing
- ▶ Brakes, Clutches, Plugs, Belts & Fluids



Evolution MotorSports Signature Gear –Enthusiast Gear

We offer a variety of t-shirts, hats and pit crew shirts that display various different EVOMS graphics and logos. All EVOMS enthusiast gear is made from high quality materials and name brands such as Dickies™. Visit our website for more details and current styles.



RACEFUEL High Octane Energy!

This is boost for the body - energy in a can! RACE FUEL is NOT for vehicle consumption, it is FUEL for the human on race day. Available exclusively at Evolution MotorSports!

www.drinkracefuel.com





EVOMS COMPANY CONTACT INFORMATION



Evolution MotorSports
1625 E. Weber Dr.
Tempe, Arizona - USA
P: 480.317.9911
F: 480.467.2191

www.EVOMS.com
www.EVOMSit.com

Pricing & performance subject to improvement without notice. Contact a Performance Specialist at EVOMS for scheduling and details.